



Nodegrid Link SR™

Deliver targeted functionality right where you need it

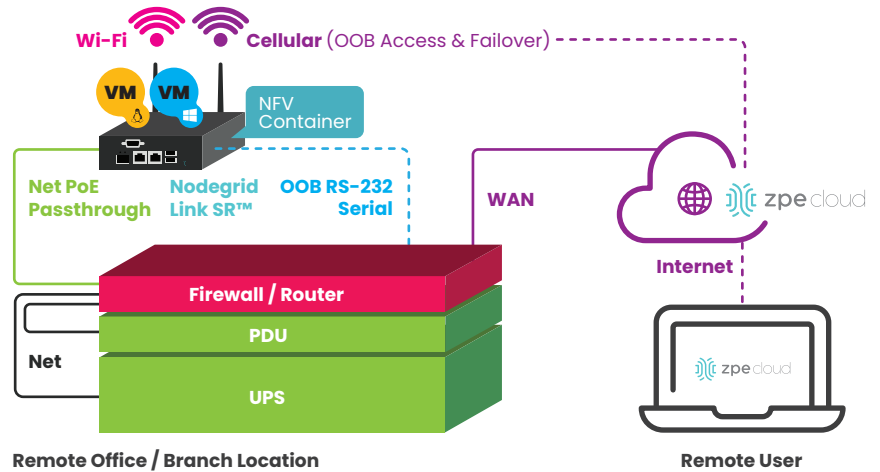
Nodegrid Link SR™ (LSR) brings versatility in a tiny networking package. With an extremely small footprint, the LSR is your link to agile services at even your most remote locations. **Deploy virtualized network functions, automated provisioning, secure out-of-band (OOB), & more – no matter where you need them.** The LSR gives you a lightweight solution to easily deploy and manage edge networks. Link SR is the only wireless WAN 5G/4G/LTE bridge with fiber interfaces for long distance connectivity in low-signal environments such as warehouse and datacenters.

Benefits

- Reduce CAPEX & OPEX expenses with a consolidated, extensible solution & automated management.
- Reduce downtime & trips to remote locations with instant access
- Minimize MTTR, downtime & expenses with secure, centralized remote device access & control
- Increases site reliability with open industry standard hardware, & easy-to-use software

Features

- Strong OOB Management Integration
- Extensible Applications with virtualization & containers
- Zero Touch Provisioning (ZTP) over the WAN for fast & easy setup in remote locations
- Integrates with ZPE Cloud & Nodegrid Clustering Feature for unified, vendor-neutral management solution
- Modern x86_64bit Linux Kernel for fast security patching & widespread software availability
- Extended Automation based on actionable data
- Failover to 5G/4G/LTE & Wi-Fi
- Gateway & Multi-Routing Table Capability
- Encrypted Data Transit with SSL, & IPSec & Wireguard VPN technologies
- DHCP Server Extra IPs for your remote site or replace your current router altogether
- Built-In Firewall
- Secure Selectable encrypted cryptographic protocols & cypher suite levels, configuration checksum™
- Power Control & Monitoring Get alerts on IT device health & solve problem automatically
- Orchestration Puppet, Chef, Ansible, RESTful API's



Nodegrid® OS comes standard with the LSR, allowing you to virtualize with guest OS, third-party and custom applications, and Docker, Kubernetes, and LXC containers. Power your LSR via PoE, and connect multiple end devices to deliver critical functionality.

LSR can be powered by PoE and combines routing capabilities via Cellular & Wi-Fi Access Point (AP), “linking” your branch server room or closets to the Internet. Lacking cellular signal where your devices are? No problem! Simply run a network cable and use Link SR as your cellular gateway.

LSR serves as a perfect solution to keeping remote branch locations functioning properly. With ZPE Cloud™, deploying and provisioning your remote devices is fast, consistent and secure. LSR allows for 24/7 remote presence at the edge of the network. With the ability to add Wi-Fi connectivity and 5G/4G/LTE failover, locations without IT personnel on staff are just a simple session away from resolution.

Nodegrid Link SR Interfaces

| | |
|------------------------|----------------------|
| ■ 1X GbE on RJ45 | ■ 1X SFP |
| ■ 2X DIO | ■ 2X OUT |
| ■ 1X Wi-Fi | ■ 1X Cellular 4G/LTE |
| ■ 1X RJ45 Serial Ports | with Dual SIM |

Technical Specifications

Connectivity

- 1X Gigabit Ethernet Port on RJ45 with Power Input (PoE)
- 1X SFP 1 Gigabit Port
- 2X Digital Out Port
- 1X Wi-Fi (Optional)
- 1X VGA Port
- 2X GPIO
- 2X USB 2.0 Hosts on Type A
- 1X Cellular Slot with Dual SIM (Optional)
- Multiple Routing Table

Managed Power Devices

Vendor-neutral PDU support

Managed IPMI Devices

OpenBMC, HP iLO, Dell iDRAC, Supermicro/Quanta IPMI, IPMI 2.0 compatible devices, Cisco CIMC/UCS, IBM IMM, Oracle ILOM, EMC/NetApp Storage IPMI

Sensors

Support for a wide range of USB sensors Managed Devices
Serial devices, USB devices, Network devices, PDU, & IPMI devices

Networking

- IPv4 / IPv6 Support
- VLAN, Layer 3 Routing, BGP, OSPF, RIP, QoS, DHCP (Client & Server)

Port Access

- Direct access by port name, TCP port, device name & IPv4/IPv6
- High performance port login: <1 sec on SSH, <3 sec on Telnet
- 250+ simultaneous sessions
- Port sharing
- Command Line Interface (CLI)
- Port custom field support, port icon configuration, port search
- Device clustering across multiple Nodegrid units
- Break-over SSH support

Access Protocols

HTTPS, SSHv2; (Optional) HTTP, Telnet & SSHv1

Device View Options

Tree, Table, Geo Map, Node & WEB with search

Power Specifications

- 10-57 VDC power input
- PoE power Input
- Power consumption 20 W typical

Operating System

Built-in x86_64bit Nodegrid OS

Warranty

2-Year Limited Warranty

Data Logging & Notifications

- Local port buffering – 20 MB per port
- Local, NFS, syslog, off-line data logging
- Time stamp & rotation for data logging
- Event destination: email, syslog, local, syslog, email, ZPE Cloud, Splunk & more
- Notification: syslog, email, ZPE Cloud, Splunk & more

Physical

- DIM Rail & Wall Mountable
- Size (L X W X H): 170 X 130 X 55 mm (6.69 X 5.11 X 2.16 in)
- Weight: 1.04 kg (2.3 lb)
- Shipping Weight: 1.58 kg (3.5 lb)
- Shipping (L X W X H): 228.6 X 342.9 X 88.9 mm (9 X 13.5 X 3.5 in)

Environmental

- Operation: -20 to 60° C (-4 to 140° F), 5-95% RH, non-cond.
- Storage: -20 to 67° C (-4 to 153° F), 10-90% RH, non-cond.

System Management

- Extensible, automated control based on actionable real-time data
- Web GUI management portal, web console, Command Line Interface (CLI)
- Linux root shell, SNMP, RESTful API
- Zero Touch Provisioning (ZTP) via LAN/DHCP, WAN/ZPE Cloud, USB for configuration & firmware updates
- Multiple & customizable user levels of access
- Auto-discovery via network scan & custom probes
- SNMPv1,v2 & SNMPv3-v1 IPv4/IPv6 with MD5, SHA-224, SHA-256, SHA-384, SHA-512, DES, AES-192, AES-256
- Orchestration Integration & Automation: Puppet, Chef, Ansible, RESTful, ZPE Cloud & Nodegrid Clustering Feature
- Manager Orchestration integration & automation: Puppet, Chef, Ansible, RESTful, ZPE Cloud & Nodegrid Manager
- File sharing via FTP, NFS, SSHFS, Windows Sharing, web file browser, ZPE Cloud
- Remote Procedure Call (RPC, gRPC)
- NetFlow, LLDP

Security

- Hardened device with BIOS protection, TPM 2.0, UEFI Secure Boot, Signed OS, Self-Encrypted Disk (SED), Geofencing
- X.509 SSH certificate support, 4096-bit encryption keys
- Selectable cryptographic protocols for SSH & HTTPS (TLSv1.3, TLSv1.2, TLSv1.1, TLSv1)
- Selectable cypher suite levels: high, medium, low, custom
- IPsec, Wireguard, OpenSSL VPN with support for multi sites
- Local, AD/LDAP, RADIUS, TACACS+, Kerberos, authentication
- SAML2 support via DUO, OKTA, Ping Identity, ADFS
- Two-Factor Authentication with RSA & DUO
- Local, backup-user authentication support
- User-access lists per port
- Group/role-based authorization: AD/LDAP, RADIUS, TACACS+
- Fine grain & role-based access control
- Firewall: IP packet & security filtering, IP forwarding support
- MD5 / SHA System Configuration Checksum™
- System event logging to file, syslog, email, ZPE Cloud, Splunk & more
- Custom security settings
- Strong password enforcement

CPU & Storage (Upgrades Available)

- Intel x86_64 Dual-Core
- 4-8GB of DDR3 DRAM
- 16GB Self Encrypted Disk (SED)

Interface

- 1X RJ45 Serial ports
- 1X SFP (1G)
- 1X Gigabit (10/100/1000BT) Ethernet interfaces on RJ45 with PoE in
- 2X GPIO Port (Digital I/O TTL level 5.5V max @ 64mA)
- 2X Digital Out Port (Signal MOSFET Digital Output 2.5V to 60V @ 500mA max)
- 2X USB 2.0 Hosts on Type A
- 1X Wi-Fi (Optional)
- 1X 4G/LTE Cellular Modem Slots with Dual SIM (Optional)
- 1X VGA port



Ordering Information

| Channel SKU | Description | CPU | Memory | Power | Special |
|-----------------------|--|---------|--------|-------------|-------------------------|
| ZPE-LSR24-Base | ZPE Nodegrid Link SR. 1 RJ45 Serial rolled, 1 ETH (PoE in), 1 SFP, 2 GPIO, 2 OUT, X86_64, 2-Cores, 4GB DDR3, Disk1: 16GB, 1 VGA. Dual DC input. AC Power Adaptor not included. Order ZPE-LSR-PSU separately. Order ZPE Cloud & app subscription. Includes Standard 2-Year Support, HW warranty, & 90-day ZPECloud.com subscription. | 2 Cores | 4GB | AC, DC, PoE | Base |
| ZPE-LSR24-W5 | ZPE Nodegrid Link SR. 1 RJ45 Serial rolled, 1 ETH (PoE in), 1 SFP, 2 GPIO, 2 OUT, X86_64, 2-Cores, 4GB DDR3, Disk1: 16GB, 1 VGA. With addition of: Wi-Fi 5 (866Mbps 2X2 dual stream 802.11ac). Dual DC input. AC Power Adaptor not included. Order ZPE-LSR-PSU separately. Order ZPE Cloud & app subscription. Includes Standard 2-Year Support, HW warranty, & 90-day ZPECloud.com subscription. | 2 Cores | 4GB | AC, DC, PoE | Wi-Fi |
| ZPE-LSR24-4G | ZPE Nodegrid Link SR. 1 RJ45 Serial rolled, 1 ETH (PoE in), 1 SFP, 2 GPIO, 2 OUT, X86_64, 2-Cores, 4GB DDR3, Disk1: 16GB, 1 VGA. With addition of: Antennas & 4G/LTE (CAT12) radio. Dual DC input. AC Power Adaptor not included. Order ZPE-LSR-PSU separately. Order ZPE Cloud & app subscription. Includes Standard 2-Year Support, HW warranty, & 90-day ZPECloud.com subscription. | 2 Cores | 4GB | AC, DC, PoE | 4G |
| ZPE-LSR24-4G-W5 | ZPE Nodegrid Link SR. 1 RJ45 Serial rolled, 1 ETH (PoE in), 1 SFP, 2 GPIO, 2 OUT, X86_64, 2-Cores, 4GB DDR3, Disk1: 16GB, 1 VGA. With addition of: Wi-Fi 5 (866Mbps 2X2 dual stream 802.11ac) & antennas & 4G/LTE (CAT12) radio with dual-SIM. Dual DC input. AC Power Adaptor not included. Order ZPE-LSR-PSU separately. Order ZPE Cloud & app subscription. Includes Standard 2-Year Support, HW warranty, & 90-day ZPECloud.com subscription. | 2 Cores | 4GB | AC, DC, PoE | 4G Wi-Fi |
| ZPE-LSR24-4G-W5-D128G | ZPE Nodegrid Link SR. 1 RJ45 Serial rolled, 1 ETH (PoE in), 1 SFP, 2 GPIO, 2 OUT, X86_64, 2-Cores, 4GB DDR3, Disk1: 16GB, 1 VGA. With addition of: Wi-Fi 5 (866Mbps 2X2 dual stream 802.11ac) & antennas & 4G/LTE (CAT12) radio with dual-SIM & dedicated 128GB Disk2 for VM/Docker applications. Dual DC input. AC Power Adaptor not included. Order ZPE-LSR-PSU separately. Order ZPE Cloud & app subscription. Includes Standard 2-Year Support, HW warranty, & 90-day ZPECloud.com subscription. | 2 Cores | 4GB | AC, DC, PoE | 4G Wi-Fi Second Storage |
| ZPE-LSR48-Base | ZPE Nodegrid Link SR. 1 RJ45 Serial rolled, 1 ETH (PoE in), 1 SFP, 2 GPIO, 2 OUT, X86_64, 4-Cores, 8GB DDR3, Disk1: 16GB, 1 VGA. Dual DC input. AC Power Adaptor not included. Order ZPE-LSR-PSU separately. Order ZPE Cloud & app subscription. Includes Standard 2-Year Support, HW warranty, & 90-day ZPECloud.com subscription. | 4 Cores | 8GB | AC, DC, PoE | Base |
| ZPE-LSR48-W5 | ZPE Nodegrid Link SR. 1 RJ45 Serial rolled, 1 ETH (PoE in), 1 SFP, 2 GPIO, 2 OUT, X86_64, 4-Cores, 8GB DDR3, Disk1: 16GB, 1 VGA. With addition of: Wi-Fi 5 (866Mbps 2X2 dual stream 802.11ac). Dual DC input. AC Power Adaptor not included. Order ZPE-LSR-PSU separately. Order ZPE Cloud & app subscription. Includes Standard 2-Year Support, HW warranty, & 90-day ZPECloud.com subscription. | 4 Cores | 8GB | AC, DC, PoE | Wi-Fi |

Ordering Information

| Channel SKU | Description | CPU | Memory | Power | Special |
|-----------------------|--|---------|--------|-------------|-------------------------|
| ZPE-LSR48-4G | ZPE Nodegrid Link SR. 1 RJ45 Serial rolled, 1 ETH (PoE in), 1 SFP, 2 GPIO, 2 OUT, X86_64, 4-Cores, 8GB DDR3, Disk1: 16GB, 1 VGA. With addition of: Antennas & 4G/LTE (CAT12) radio. Dual DC input. AC Power Adaptor not included. Order ZPE-LSR-PSU separately. Order ZPE Cloud & app subscription. Includes Standard 2-Year Support, HW warranty, & 90-day ZPECloud.com subscription. | 4 Cores | 8GB | AC, DC, PoE | 4G |
| ZPE-LSR48-4G-W5 | ZPE Nodegrid Link SR. 1 RJ45 Serial rolled, 1 ETH (PoE in), 1 SFP, 2 GPIO, 2 OUT, X86_64, 4-Cores, 8GB DDR3, Disk1: 16GB, 1 VGA. With addition of: Wi-Fi 5 (866Mbps 2X2 dual stream 802.11ac) & antennas & 4G/LTE (CAT12) radio with dual-SIM. Dual DC input. AC Power Adaptor not included. Order ZPE-LSR-PSU separately. Order ZPE Cloud & app subscription. Includes Standard 2-Year Support, HW warranty, & 90-day ZPECloud.com subscription. | 4 Cores | 8GB | AC, DC, PoE | 4G Wi-Fi |
| ZPE-LSR48-4G-W5-D128G | ZPE Nodegrid Link SR. 1 RJ45 Serial rolled, 1 ETH (PoE in), 1 SFP, 2 GPIO, 2 OUT, X86_64, 4-Cores, 8GB DDR3, Disk1: 16GB, 1 VGA. With addition of: Wi-Fi 5 (866Mbps 2X2 dual stream 802.11ac) & antennas & 4G/LTE (CAT12) radio with dual-SIM & dedicated 128GB Disk2 for VM/Docker applications. Dual DC input. AC Power Adaptor not included. Order ZPE-LSR-PSU separately. Order ZPE Cloud & app subscription. Includes Standard 2-Year Support, HW warranty, & 90-day ZPECloud.com subscription. | 4 Cores | 8GB | AC, DC, PoE | 4G Wi-Fi Second Storage |

Accessories

ZPE-LSR-PSU ZPE Nodegrid Link SR. Power Supply (Primary & Secondary)

Support

- ZPE-LSR-TX-BASE-ALL-EW1G ZPE Nodegrid Link SR. 1Y 24X7 Gold Upgrade Support
- ZPE-LSR-TX-BASE-ALL-EW2G ZPE Nodegrid Link SR. 2Y 24X7 Gold Upgrade Support
- ZPE-LSR-TX-BASE-ALL-EW3G ZPE Nodegrid Link SR. 3Y 24X7 Gold Upgrade Support



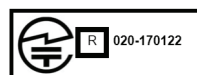
NOTE: If you need more storage or other combinations please contact ZPE Sales: sales@zpesystems.com



FCC ID: 2ARCQ-EM7565
IC: 24339-EM7565



FCC ID: N7NEM91
IC: 2417C-EM91



FCC ID: RYK-261ACNBT
IC: 6158A-261ACNBT

